



ANSI/KCMA A161.1

Certificate Number: 24069
Issue Date: August 15, 2024
Expiration Date: August 31, 2025
Supersedes Certificate No.: 23035

LISTING
CERTIFICATE

THIS CERTIFIES THAT

DDN Interior Supply
Auburn, WA

is a current participant in the Kitchen Cabinet Manufacturers Association Certification Program and is manufacturing the following lines of kitchen cabinets and/or bathroom vanity cabinets in conformance with American National Standard ANSI/KCMA A161.1-2022, *Performance and Construction Standard for Kitchen and Vanity Cabinets*:

Factory Assembled
Framed Cabinets, Stained & Painted Finish

These cabinet lines are listed in the Kitchen Cabinet Manufacturers Association Directory of Certified Cabinet Manufacturers. This manufacturer is authorized to apply KCMA Certification Seals to the factory assembled kitchen and bath cabinet lines listed above. Flat pack (unassembled) cabinets, if sold by this manufacturer, are not certified.

This certificate may be updated at any time and will expire on the date listed above. This certificate may also be canceled for non-conformity with the requirements of the Certification Program or upon voluntary withdrawal from the program by the manufacturer.

Charles P. Arnold
Vice President Standards & Certification

This certificate is current as of the issue date
Current listing information is at www.kcma.org



INSPECTION AND TEST REPORT FOR CABINETS TO DETERMINE COMPLIANCE WITH ANSI/KCMA A161.1-2022

Laboratory Name: **VGO**
 Laboratory Personnel: **Carson Owens**
 Date: **August 1, 2024** Lab Ref. No. **24077** Retest of Ref. No. **N/A**
 Cabinet Manufacturer: **DDN Interior Supply**
 Name of Cabinet: **Framed Stained Doors**
 Type of Test: **Regular**

The tested cabinet complies with ANSI/KCMA A161.1-2022

General Information and Initial Inspection

Date Cabinet Received: **June 3, 2024**
 Condition of Cabinet when Unpacked: **Slight whitening of stain on upper door and drawer front.**
 ANS Label on Not used
 Date Testing Started **June 25, 2024** Completed **July 31, 2024**

If ready to assemble cabinet:

Wall unit pieces complete	N/A
Base unit pieces complete	N/A
Assembly instructions complete	N/A

Inspection and Test Results

<u>2.0 General Construction Requirements</u>	<u>Results</u>
2.1 Cabinets fully enclosed	Pass
2.2 Equipment cabinets have access panel	N/A
2.3 Toe space minimum 51mm (2") deep and 76mm (3")high	Pass
2.4 Utility cabinets same as base and wall cabinets	N/A
2.5 Doors and Drawers:	
Properly aligned with cabinet	Pass
Close without excessive binding or looseness	Pass
Have means of effective functioning	Pass
2.6 Cabinet Construction	
2.6.1 All materials of sufficient thickness for rigidity	Pass
2.6.2 Face frames provide rigid construction	Pass
2.6.3 Frameless cabinet components provide rigid construction	N/A
2.6.4 Corner or linear bracing where necessary	Pass
2.7 Metal cabinets are rust resistant with edges and surfaces free of sharp edges	N/A
2.8 Moisture content of solid and composite wood materials is less than 10%	Pass
2.9 Exposed construction joints meet tolerance shown in drawings 2.9A, 2.9B, 2.9C, 2.9D, and 2.9E	Pass



Lab No.: 24077

Date: August 1, 2024

Manufacturer: DDN Interior Supply

3.0 General Test Requirements

3.1	Installation instructions included with cabinet	No
3.2	Average room temperature during testing	<u>75 F</u>
	Average relative humidity during testing	<u>50%</u>

4.0 Hardware Letter on file indicating finish compliance with current version of ANSI A156.9 No

5.0 Structural Tests for Cabinets

5.1	Static Loading of Shelves and Bottoms	Deflection (inches)		
	Unit	Allowable	Actual	
	Wall - top shelf	0.15	0.02	<u>Pass</u>
	Wall - middle shelf	0.15	0.02	<u>Pass</u>
	Wall - bottom	0.15	0.05	<u>Pass</u>
	Base - shelf	0.15	0.11	<u>Pass</u>
	Base- bottom	0.15	0.04	<u>Pass</u>
5.2	Static Loading for Wall Mounted Cabinets	Load (pounds)		
	Mounted Wall Cabinet	Required <u>600</u>	Actual <u>600</u>	<u>Pass</u>
	Mounted Base Cabinet	Required _____	Actual _____	<u>N/A</u>
5.3	Base Front Joint Loading	Required <u>200</u>	Actual <u>200</u>	<u>Pass</u>
5.4	Impact on Shelves, Cabinet Bottoms, and Drawer Bottoms			<u>Pass</u>
5.5	Impact on Base Cabinet Front and Door			<u>Pass</u>

6.0 Door Operating Tests Set or Deflection (inches)

6.1	Door Racking and Hinge Set	Allowable	Actual	
	Amount of set	<u>0.065</u>	<u>0.050</u>	<u>Pass</u>
	Hinges, cabinet, and door not visibly damaged			<u>Pass</u>
	Connections not loose			<u>Pass</u>
6.2	Door-Holding Device and Hinge Operation	Sag or Deflection (inches)		
	Door and holding device operable	Allowable	Actual	<u>Pass</u>
	Amount of sag of door	<u>0.065</u>	<u>0.064</u>	<u>Pass</u>
	Door shape same as before test			<u>Pass</u>
	Hinges not visibly damaged and connections not loose			<u>Pass</u>
	hinge type	<u>x</u> soft close	_____ regular	

7.0 Drawer Operation Tests

7.1	Drawer Operation			
	Drawer operable at end of test			<u>Pass</u>
	No failure of drawer assembly or operating system			<u>Pass</u>
	No operation interference from drawer bottom deflection			<u>Pass</u>
7.2	Drawer-Closing Impact			
	No looseness or attachment failure in any part of the drawer front assembly			<u>Pass</u>



Lab No.: 24077

Date: August 1, 2024

Manufacturer: DDN Interior Supply

8.0 Finish Specifications

8.1 Appearance - Exterior exposed surfaces

Free of saw marks and other imperfections	Pass
Exposed surfaces filled and sanded, edge banded, of otherwise finished	Pass
Free of finish defects (runs, orange peel, fatty edges, blushing, etc.)	Pass
Clean and free of scratches and residue	Pass
Touch up colors match surrounding areas	Pass
Free of printing caused by packing material	Pass
Nails and staples set and holes filled	Pass

Appearance - Interior exposed surfaces

Free of saw marks	Pass
Free of poor workmanship	Pass
Exposed surfaces covered or finished	Pass

9.0 Finish Tests

9.2 Shrinkage and Heat Resistance

Initial examination	Pass
14 day reexamination	Pass

9.3 Hot and Cold Check Resistance

Initial examination	Pass
14 day reexamination	Pass

9.4 Chemical Resistance (P=Pass, F=Fail)

Chemical	Door Front		Drawer Front		Front Frame		End Panel	
	Initial	14-day	Initial	14-day	Initial	14-day	Initial	14-day
Vinegar	Pass	Pass	Pass	Pass	Pass	Pass	Pass	Pass
Lemon Juice	Pass	Pass	Pass	Pass	Pass	Pass	Pass	Pass
Orange Juice	Pass	Pass	Pass	Pass	Pass	Pass	Pass	Pass
Grape Juice	Pass	Pass	Pass	Pass	Pass	Pass	Pass	Pass
Catsup	Pass	Pass	Pass	Pass	Pass	Pass	Pass	Pass
Coffee	Pass	Pass	Pass	Pass	Pass	Pass	Pass	Pass
Olive Oil	Pass	Pass	Pass	Pass	Pass	Pass	Pass	Pass
Alcohol	Pass	Pass	Pass	Pass	Pass	Pass	Pass	Pass
Detergent/Water	Pass	Pass	Pass	Pass	Pass	Pass	Pass	Pass
Mustard	Fail	Pass	Fail	Pass	Fail	Pass	Fail	Pass

Final chemical results Pass

9.5 Detergent and Water Resistance

Test Duration	x 4 hr	24 hr
Initial examination	Pass	
14 day reexamination		Pass

9.6 Metal Cabinet Rust Resistance

No blistering of test unit	N/A
Rust creepage from edge of scratches does not exceed 1/16 inch	N/A

9.7 Water Holdout of Interior Surfaces

Initial examination	Pass
14 day reexamination	Pass

Kitchen Cabinet Manufacturers Association
1768 Business Center Dr., Suite 390
Reston, VA 20190
Phone (703)264-1690



Lab No.: 24077

Date: August 1, 2024

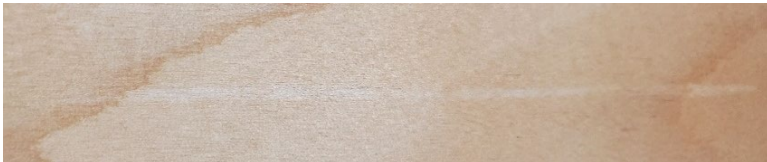
Manufacturer: DDN Interior Supply

Picture of Cabinets



Explanation of Failures

 x If checked at left, see Appendix A for comments on 9.4 and/or 9.5.



As Received: Slight white stripe on upper door



As Received: Slight white stain on drawer front



Lab No.: 24077

Date: August 1, 2024

Manufacturer: DDN Interior Supply

Appendix A

Explanation of Failures

9.4 Chemical Resistance

 N/A

Initial Examination:

 x Slight

 Moderate

 Severe

staining by Mustard

Fourteen Day Reexamination:

Staining x not visible.

 faded but still visible.

 unchanged.

9.5 Detergent and Water Resistance

 X N/A

Initial Examination:

 Partial

 Complete delamination of edgebanding.

 face.

 back.

 face and back surfaces.

 Slight

 Moderate

 Severe swelling evident on face.

 back.

 face and back surfaces.

 Slight

 Moderate

 Severe discoloration

 blistering

 checking

 whitening

 darkening

of finish.

 grain.

 frame.

Fourteen Day Reexamination:

 not visible.

 faded but still visible.

 unchanged.

Description (if needed)

Kitchen Cabinet Manufacturers Association
1768 Business Center Dr., Suite 390
Reston, VA 20190
Phone (703)264-1690



Lab No.: 24077

Date: August 1, 2024

Manufacturer: DDN Interior Supply

Cabinet Hardware

Hinges



Drawer Slides

